



Visual story for Barrière By Sur Measure



What to Expect



This is a family show, everyone is welcome.



The show will last 30 minutes.



The themes of this show are music, humour, and fun.



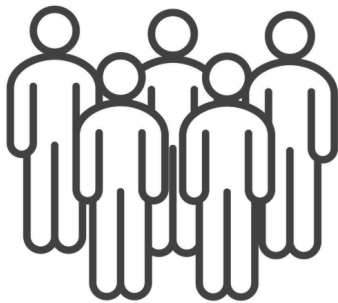
The performances will be **audio described**, please ask an access steward for a **headset** if you would like to **hear** the audio description.



The show will be outside. Outside Hanley Bus Station.



The stage for this show is a barrier that moves up and down. The performers will use the barrier while it is moving.



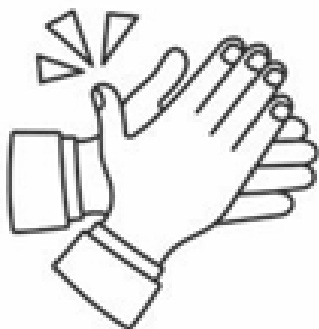
You will be able to stand and watch the performance.



While the performers are using the barrier you should watch the show and not get near the barrier.



When the barrier lifts at the end of the show you may pass through.



You can clap and make noise for the performers during the show and at the end.



You can **leave** at any point during the show. You can also **come back** any time during the show. You can make noise and move around during the show.



The show will include music, acrobatics, and silliness.



The performers will perform musical instruments sat on the barrier.



The performers will perform tricks using the barrier.



The performers may be silly and pretend to wobble or fall.



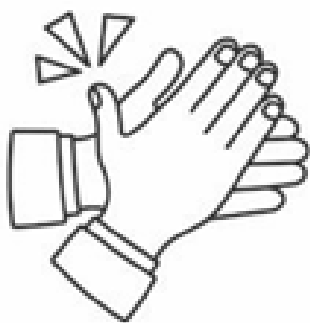
The performers are all trained and it is **very safe**.



The show will have lots of music to make you smile.



The show will have acts of acrobatics to make you laugh.



SUR MESURE

When the show finishes please clap and make lots of noise for the performers.

The show Barrière is made by Sur Measure