



The Lost Opera Easy Read



The Lost Opera is Dance Performance.

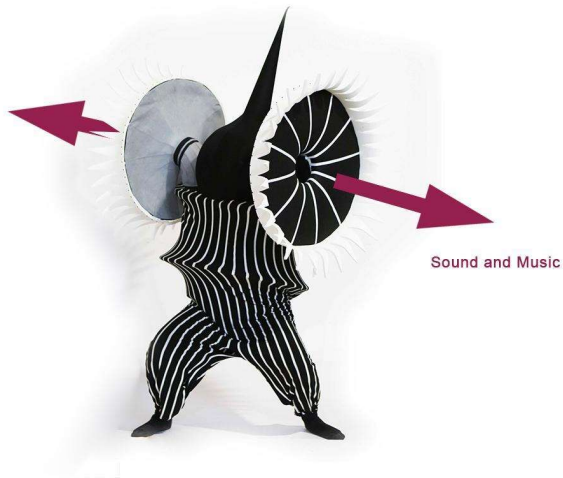
By Artist Ashley Peevor and Dancer Nikki Watson.



The Show involves **three characters.**



They plays sound from their costumes.



Togg plays the Sound through their **shoulders**.

They play a **percussion** sound



Imp plays their sound through their **arms**.

They play the softer **string** music.



Pileous plays the sound through their **neck** ruffle.

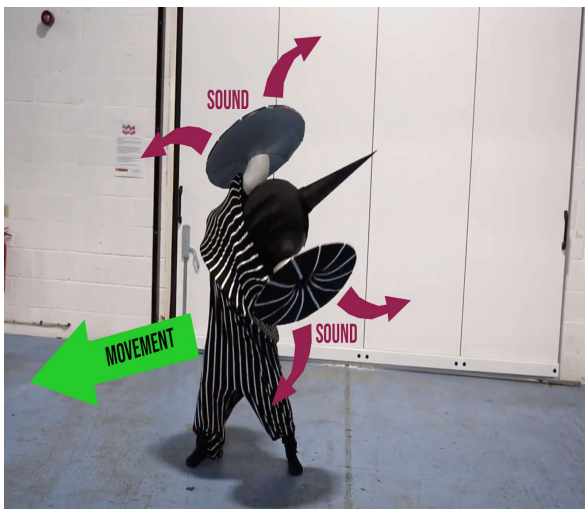
They play the **plucked** sounds.



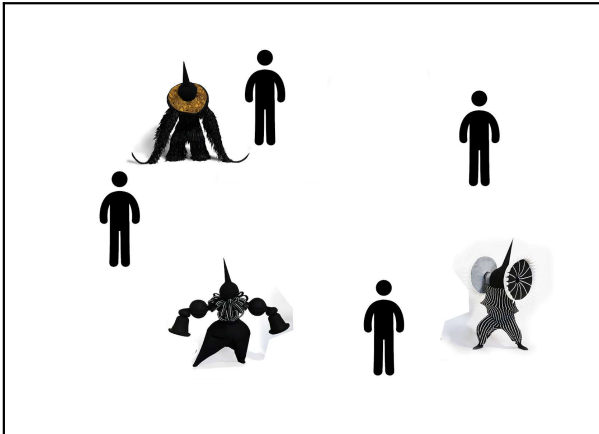
It will **sound** like a **band** or **orchestra**.



The **music** is sometimes **unusual**.



The **movement of the costumes** **changes** how the **music is heard**. this is called the doppler effect.



It will **sound different** depending on where you stand.



You can use your **phone** to play along with the performance if you want to.



You can pick **your favourite** character, and turn your volume up and play along

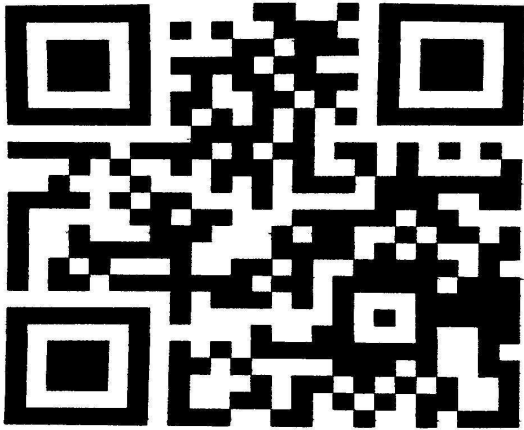




You have to be able to **see the costumes** for this to work.



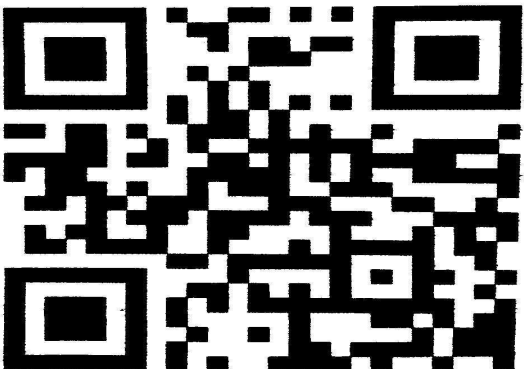
QR CODE 1



1. Take a picture of this QR code.

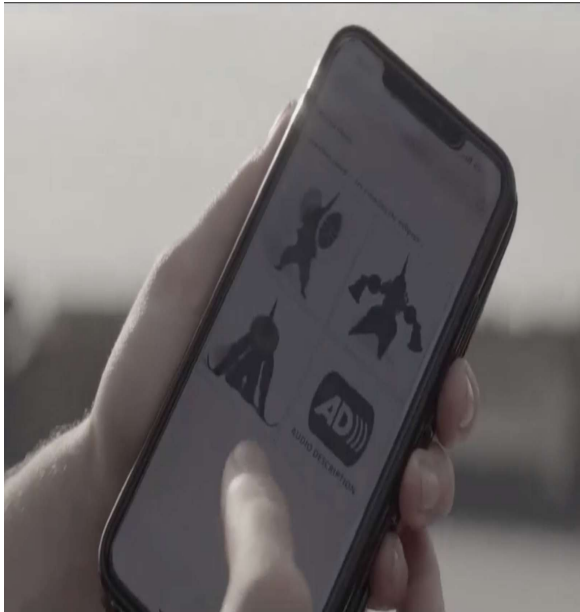
Select the option that comes up.

QR CODE 2



2. Take a picture of this QR code.

Select the option that comes up.



You will **see** an icon of **Togg, Imp, Pileous**

Select which **one** you would like to tune into.



A member of our team **wearing The Lost Opera T-Shirt** can help.



shutterstock.com · 516477817

Follow this link for more **information** and **help** you prepare.

<https://festival.org/whats-on/gdif-lostopera/>